



Volume 2 - Issue 1 Summer Wrap-Up 2025

PROGRESS IN ACTION

At the **Salina Grace Community Resource Center**, we've seen incredible momentum in 2025—and we're just over halfway through the year! From new services to deeper partnerships and growing impact, God is using your support to make real and lasting change in the lives of our neighbors in need.



Guests enjoyed a fun craft project led by the Salina Public Library

Every Tuesday from 9-11 AM, community partners are on-site to meet with guests in person.

These visiting agencies include:

Salina Family Healthcare	Catholic Charities
Central Kansas Mental Health	Resiliency Clubhouse
Angels Care Home Health	Saline County Health Dept
CKF Addiction Treatment	Salina Rescue Mission
DCF	Salina Public Library
OOCK Transportation	Veterans Affairs

New Showers & Laundry: Restoring Dignity

Thanks to the generosity of our supporters, we've opened our new shower, laundry and clothing room - a long-awaited and deeply meaningful addition. In the first month of use, guests took 87 showers, completed 54 loads of laundry, and received 45 changes of clean clothes.

These aren't just hygiene services. They restore dignity, self-respect, and give our guests the confidence to take the next step forward. As one guest shared after their first visit, "It feels like I get to be myself again."

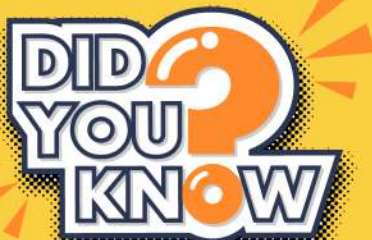
BY THE NUMBERS / MAY - AUGUST 2025

40-60 GUESTS DAILY

(With some days exceeding 80)

6,695 MEALS SERVED

(Breakfast/Lunch Served Mon-Fri)



MOST REQUESTED SUPPORT SERVICES

- Housing Assistance
- Assistance with Applications (SNAP, Medical, Employment)
- Basic Medications

COMMUNITY RESOURCE CENTER

315 S. Broadway Blvd. Salina, KS 67401

785-833-2360

Monday - Thursday 7:30 AM - 4:00 PM

Friday 7:30 AM - 2:00 PM

WINTER SHELTER

Open Nov 15th - March 15th

Call for referral: 785-819-5542

Grand Avenue United Methodist Church

304 W. Grand Ave. Salina, KS 67401

CORRECTING THE RECORD

WHAT'S REALLY HAPPENING AT SALINA GRACE

WRITTEN BY CHAD YOUNG, EXECUTIVE DIRECTOR

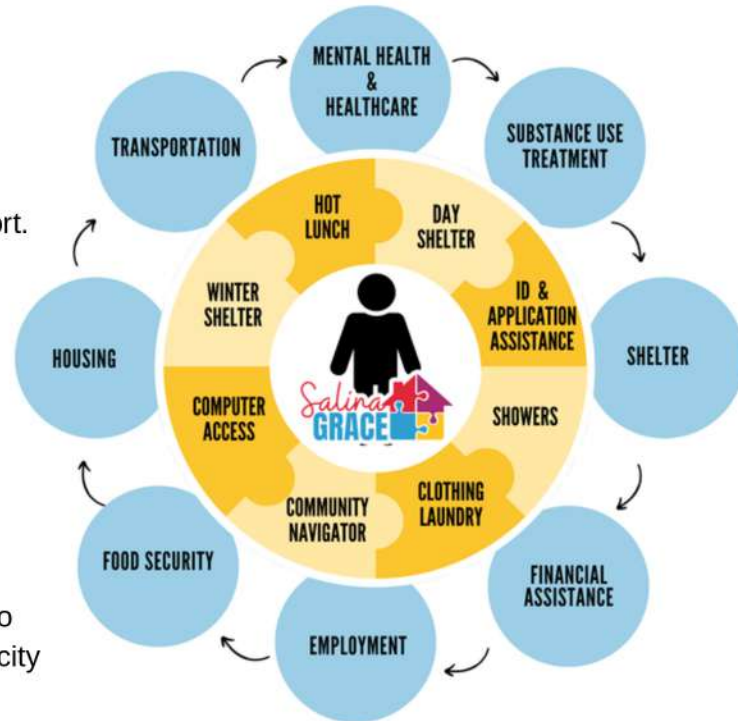
A recent article stated, "over 30% of Salina Grace clients come from outside Salina." The truth? Every person we serve lives here. Some are new to the city about 30% have been in Salina for 6 months or less - they come to reconnect with family, find work, seek healthcare and treatment opportunities, or are escaping a crisis. And yes, some come for shelter because many of our rural Kansas communities do not have the available resources we are blessed to have.

Salina Grace is a Multi-Agency Center (MAC), a centralized hub where neighbors in need can access multiple resources in one place—shelter, meals, case management, and community support.

The city's proposed \$90,000 for 2026 is 16% of our budget, this is a significant partnership. Public funding signals community trust, helping us leverage additional grants and strengthen partnerships. MACs deliver real benefits: reducing emergency service costs, improving public health and safety, and helping residents achieve stability and employment. Every public dollar is stretched through private donations, volunteers, and partnerships, turning limited resources into lasting change.

Our mission is simple: meet urgent needs and create pathways to stability—right here, in Salina. With the continued support of the city and county, along with foundations, individuals, businesses and churches, we all work together to improve the lives of our neighbors.

AS A MULTI-AGENCY CENTER, OUR GOAL IS TO REMOVE BARRIERS AND MAKE ACCESS TO SERVICES EASIER— SURROUNDING EACH PERSON IN CRISIS WITH THE SUPPORT OF MULTIPLE PARTNER AGENCIES WORKING TOGETHER



NOT
A STATISTIC,
A REAL
PERSON

After years of struggling with tasks that seemed simple for others, Michael was finally diagnosed with ADHD. "I finally understood why I had trouble keeping jobs and managing daily life," he said. "It wasn't just me—it was a real condition, and now I have medications that help me focus."

As a veteran, Michael worked with the VA to secure housing—a process made even more challenging by the lack of affordable, ADA-accessible, housing options.

Thanks to your support, Michael didn't have to face his challenges alone.

At Salina Grace, he worked with our community navigators to address his specific needs and plan for the long-term support he would need once he found a place of his own.

YOUR SUPPORT GAVE MICHAEL THE HELP HE NEEDED WHILE HE WORKED TOWARD HOUSING - BUT MOST IMPORTANTLY, YOU GAVE HIM HOPE. THANK YOU!



Partner with us to Change Lives
DONATE TODAY

www.salinagrace.org/donate

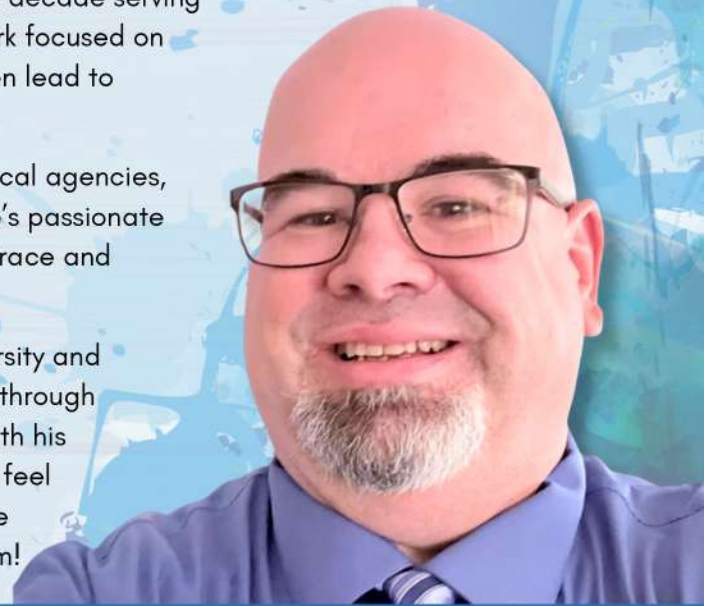
Meet Ian Green

DIRECTOR OF PROGRAMS AND COMMUNITY COLLABORATIONS

We're excited to introduce Ian Green as the new Director of Programs and Community Collaborations for Salina Grace! Ian brings over 15 years of experience in social services in the Salina community. Before joining Salina Grace, he spent nearly a decade serving individuals facing both mental health and addiction challenges. His work focused on connecting clients to vital resources and reducing the barriers that often lead to repeated visits to emergency rooms, jail, or hospitalization.

With deep roots in Salina and strong working relationships with many local agencies, Ian is no stranger to the network of support our community provides. He's passionate about leveraging those connections to strengthen the work of Salina Grace and help more people access the help they need.

Ian holds a Bachelor of Science in Sociology from Emporia State University and is a Licensed Addictions Counselor, having completed that coursework through Fort Hays State University. Outside of work, Ian enjoys spending time with his kids, fishing, photography, and the occasional well-earned nap. Please feel free to reach out to Ian if you have questions about Salina Grace or are interested in getting involved. We're so grateful to have him on our team!



Thank You

We are deeply grateful for the many community members who came out to support Salina Grace at recent County and City Commission meetings. Your presence showed that our work has strong backing right here in Salina.

A special shout-out goes to Linda Salem and First Presbyterian Church, along with all others who took the time to show up and stand with us. Your support is a powerful reminder that our mission is a community effort, and together we can continue to make a lasting difference in the lives of our neighbors.

ITEMS OF NEED

- Men's Belts
- Ladies' Underwear (new / assorted sizes)
- Sports Bras (assorted sizes)
- Deodorant (men's / women's)
- Shaving Cream
- Bottled Water

ITEMS CAN BE DROPPED OFF AT THE COMMUNITY RESOURCE CENTER DURING REGULAR BUSINESS HOURS.

SHOP OUR AMAZON WISHLIST



Please note that many items have quantities listed, allowing you to choose how many of each you would like to purchase. The list will be updated regularly as our needs change.

<https://a.co/f5gZL2s>



Salina Grace Foundation
645 E. Crawford Suite E8
Salina, KS 67401



www.salinagrace.org

MAKE A DIFFERENCE TODAY

Name _____
Address _____
City, State, Zip _____
Email _____
Phone _____

PROGRESS IN ACTION

Behind each gift is a changed life—a meal served, a birth certificate obtained, a fresh start made possible. Your support helps write the next chapter of hope for our neighbors in need.

My gift today: \$ _____ to help as much as possible

Check enclosed Bill my credit card

Please make checks payable to *Salina Grace Foundation* and mail to:

Salina Grace Foundation
645 E. Crawford Suite E8
Salina, KS 67401

MAKE A ONE TIME OR RECURRING GIFT ONLINE WWW.SALINAGRACE.ORG



WEBSITE



PAYPAL



@salinagrace



DONATE BY CARD

Name on Card _____
Card Number _____
Card Type Expiration Date CVC _____
Amount _____
Signature _____

THANK YOU!

A receipt for your tax-deductible gift will be mailed to you.

